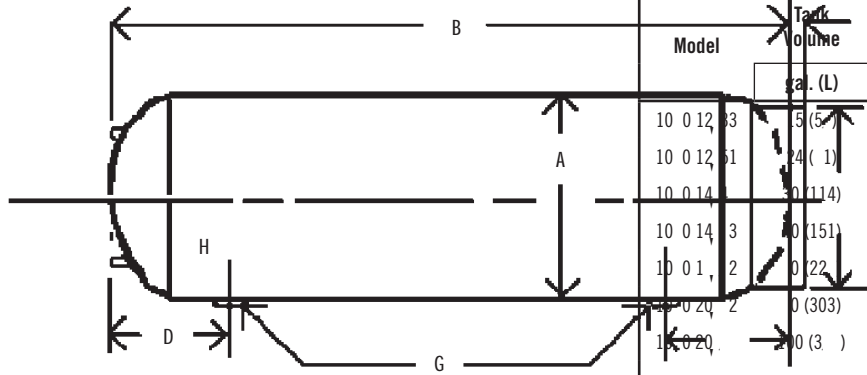
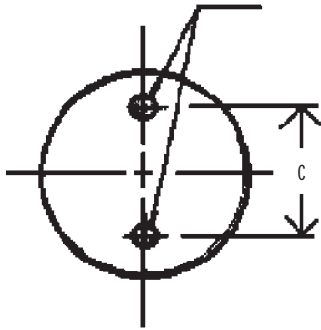


A A ACCESS IES
E PAN ION ANK (A ME)
1060 E IE

1060 P , 201
D , 1A 2010



Model	Tank Volume	A	
		ga. (L)	in. (mm)
10 0 12 3	15 (5)	12 (305)	33.00
10 0 12 61	24 (1)	12 (305)	51.00
10 0 14	30 (114)	14 (35)	4 .00
10 0 14 3	40 (151)	14 (35)	3.00
10 0 1, 2	60 (22)	1 (40)	2.00
10 0 20 2	80 (303)	20 (50)	2.50
10 0 20	90 (3)	20 (50)	2.00

Materials of Construction

Maximum Operating Conditions

	450 (232)

1060 P 202
D FEB A 2012
2010

A A ACCESS IES
P ECHA GED (A ME) E PAN ION ANK
1060B E IE + (10 35 GAL.)

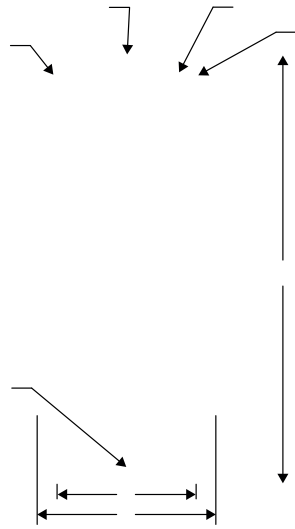


Materials of Construction



A ACCESS IES
 P ECHA GED (A ME) E PAN ION ANK
 1060B E IE + (53-1000 GAL.)

1060 P 203
D N E 1BE 2015
 10 0 203
 2012



Models 1060B-200 to 1060B-2500

Models 1060B-3000 to 1060B-4000

Model	Tank Volume	Maximum Acceptance Volume	A	B	C	System Connection	Flange	Shipping Weight
	gal. (L)	gal. (L)	in. (mm)	in. (mm)	in. (mm)		in. (mm)	lbs. (kg)
10 0 -200	53 (200)	53 (200)	24.00 (10)	3 .4 (14 .5)	1 .00 (4 .0)		0 .5 (1 .)	225 (102)
10 0 -300	0 (300)	0 (300)	24.00 (10)	52.2 (132 .)	1 .00 (4 .0)		0 .5 (1 .)	2 3 (12 .)
10 0 -400	10 (400)	10 (400)	24.00 (10)	1 .14 (1 0 .)	1 .00 (4 .0)	1.50 (3 .)	0 .5 (1 .)	341 (155)
10 0 -500	132 (500)	132 (500)	24.00 (10)	0.14 (.)	1 .00 (4 .0)	1.50 (3 .)	0 .5 (1 .)	403 (1 3)
10 0 - 00	15 (00)	15 (00)	30.00 (2)	1 .00 (4 .0)	1 .00 (4 .0)	1.50 (3 .)	0 .5 (1 .)	42
10 0 - 00	211 (00)	211 (00)	30.00 (2)	1 .00 (4 .0)	1 .00 (4 .0)	1.50 (3 .)	0 .5 (1 .)	
10 0 -1000	2 4 (1000)	2 4 (1000)	3 0 .00 (1 2)	1 .00 (4 .0)	2 .00 (11)	1.50 (3 .)		
10 0 -1200	31 (1200)	31 (1200)	3 0 .00 (1 2)	1 .00 (4 .0)	2 .00 (11)	1.50 (3 .)		
10 0 -1400	3 0 (1400)	3 0 (1400)	3 0 .00 (1 2)	1 .00 (4 .0)	2 .00 (11)	1.50 (3 .)		
10 0 -1 00	422 (1 00)	422 (1 00)	3 0 .00 (1 2)	1 .00 (4 .0)	2 .00 (11)	1.50 (3 .)		
10 0 -2000	52 (2000)	52 (2000)	3 0 .00 (1 2)	5.00 (215 .)	2 .00 (11)	1.50 (3 .)		
10 0 -2500	100 (2500)	100 (2500)	3 0 .00 (1 2)	5.00 (215 .)	2 .00 (11)	1.50 (3 .)		1435 (52)
10 0 -3000	150 (3000)	150 (3000)	3 0 .00 (1 2)	5.00 (215 .)	2 .00 (11)	1.50 (3 .)		1550 (05)
10 0 -4000	250 (4000)	250 (4000)	3 0 .00 (1 2)	5.00 (215 .)	2 .00 (11)	1.50 (3 .)	0 .5 (1 .)	2 3 (11 .)

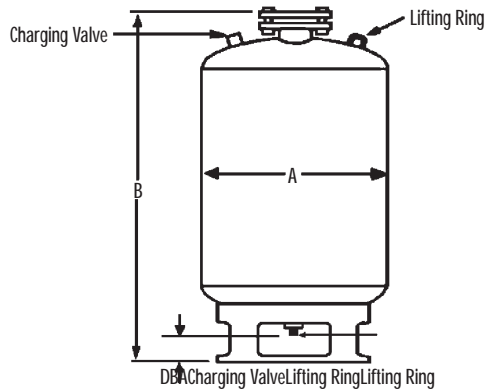
Model

35 240 (1. 115)

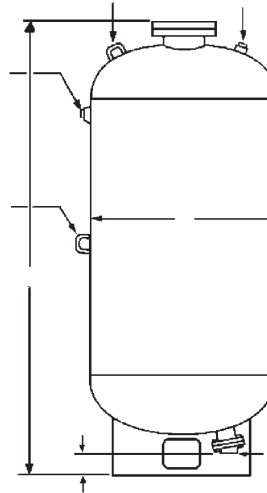
125 3 (2)

A A ACCESS IES

P ECHA GED (A ME) BLADDE
 E PAN ION ANK FO PO ABLE / A E
 1060BP E IE



Models 1060BP-600 & 1060BP-800



Models 1060BP-1000 & 1060BP-2000

Model	Tank Volume	Maximum Acceptance Volume	A	B	System Connection NPT	D	Shipping Weight
	gal. (L)	gal. (L)	in. (mm)	in. (mm)	in. (mm)	in. (mm)	lbs. (kg)
10 0 - 00	15 (00)	15 (00)	30 (2)	5 (1 51)	2 (51)	4. 5 (121)	3 0 (1 4)
10 0 - 00	211 (00)	211 (00)	32 (13)	(1 30)	2 (51)	4. 5 (121)	4 5 (21)
10 0 -1000	2 4 (1000)	2 4 (1000)	3 (14)	(2210)	3 ()	.50 (21)	. 35 (334)
10 0 -1200	31 (1200)	31 (1200)	3 (14)	(24)	3 ()	.50 (21)	. 45 (33)
10 0 -1400	3 0 (1400)	3 0 (1400)	3 (14)	111 (2 1)	3 ()	.50 (21)	00 (40)
10 0 -1 00	422 (1 00)	422 (1 00)	4 (121)	4 (2134)	3 ()	. 5 (222)	1210 (550)
10 0 -2000	52 (2000)	52 (2000)	4 (121)	(243)	3 ()	. 5 (222)	1305 (5 3)

Materials of Construction

Material	
Material	
Material	

Maximum Operating Conditions

Maximum Operating Pressure	200 (3)
Maximum Operating Temperature	125 s (2)

Typical Specification

Material	10 0
Material	125 s (2)
Material	

- For Domestic Potable Water Systems.
- Designed and constructed per ASME, Section VIII, Division 1.
- California code sight glass available upon request.
- Allow a minimum of 18" (457 mm) clearance for system piping.
- Standard factory charge is 30 psi (207 kPa) unless otherwise specified.

A A ACCESS IES
P ECHA GED (A ME) HO , ON AL
E PAN ION ANK
1060D E IE

1060 P , 205
D 1A 2010

- Not for Domestic Potable Water Systems.
- California code sight glass available upon request.
- Designed and constructed per ASME Section VIII, Division 1.

A A ACCESS IES
 PECHA GED (A ME) BLADDE
 E PAN ION ANK FO PO ABLE / A E
 1060DP E IE

Model	Tank Volume	Acceptance Volume	A	B	System Connection NPT	Shipping Weight
	gal. (L)	gal. (L)	in. (mm)	in. (mm)	in. (mm)	lbs. (kg)
10 0 -5	3.5 (13)	2.3 (.)	10 (254)	14 (35)	0.5 (1)	22 (10)
10 0 -12	5.0 (1)	3.3 (12.5)	12 (305)	14 (35)	0.5 (1)	2 (13)
10 0 -20	10.0 (30)	5.3 (20.1)	12 (305)	20 (50)	0.5 (1)	34 (15)
10 0 -30	15.0 (5)	10.0 (3 .)	1 (40)	23 (5 4)	1.00 (25)	4 (2)
10 0 -42	22.0 (3)	14.5 (54.)	1 (40)	32 (13)	1.00 (25)	(40)
10 0 - 0	2 .0 ()	1 .5 (.2)	1 (40)	34 (4)	1.00 (25)	3 (42)
10 0 - 0	35.0 (132.5)	23.5 (.0)	1 (40)	45 (1143)	1.00 (25)	10 (4 .4)
10 0 -100	45.0 (1 0)	30 (113.)	20 (50)	3 (5)	1.00 (25)	14 (.1)
10 0 -125	60.0 (22)	40 (151.4)	20 (50)	4 (1245)	1.00 (25)	1 5 (.4)
10 0 -1 0	80.0 (2 5)	4 (1 . .)	24 (10)	4 (11)	1.50 (3)	25 (11)
10 0 -1 0	100.0 (303)	53.0 (200.)	24 (10)	4 (1245)	1.50 (3)	2 (122)
10 0 -210	150.0 (341)	70 (22 .1)	24 (10)	52 (1321)	1.50 (3)	2 3 (12)

Materials of Construction

Shell	304 SS
Internal Components	304 SS
Welds	304 SS
Fasteners	304 SS

Maximum Operating Conditions

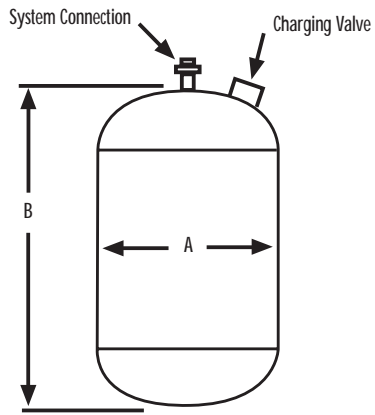
Maximum Working Pressure	240 (115)
Maximum Working Temperature	150 (1034)

- For Domestic Potable Water Systems & draw-down tanks for Pressure Booster Systems.
- Designed and constructed per ASME, Section VIII, Division 1.
- Standard factory charge is 40 psi (276 kPa) unless otherwise specified.

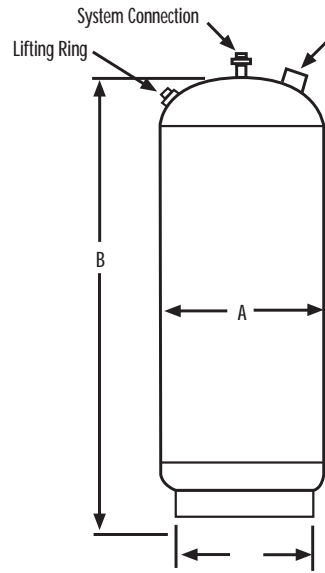
Typical Specification

Material	304 SS
Temperature	150 (1034)
Pressure	40 (276)

A A ACCESS IES
P ECHA GED (A ME)T E ICAL
E PAN ION ANK
1060DT E IE



Models 1060DV-15 to 1060DV-20



Models 1060DV-40 to 1060DV-280

THIS PAGE INTENTIONALLY LEFT BLANK