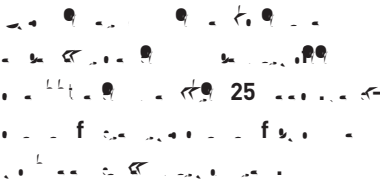
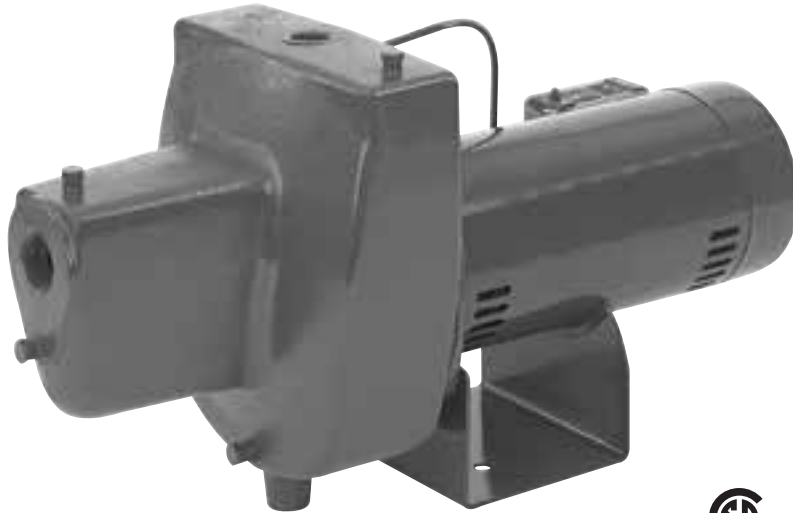


B

Cast iron, self-priming shallow well jet pumps



A A

for homes, farms and cottages.

A

Operating temperature: 140°F
 Maximum pressure: 50 PSI

A 15: 5HN = 1.7; 7HN = 1.1; 10HN = 1.3

A 25: 5HN = 4.4; 7HN = 4.4; 10HN = 2.6

B: Close-grained cast iron

A: High-strength Lexan®

A: Lexan®

A: Noryl®

A: Reinforced polypropylene

A: One-piece threaded, 416 grade stainless steel

B: Steel, 12 gauge

A

A: Close-grained cast iron body, specially treated for corrosion resistance. Drain port provided for easy winterizing.

B: High-strength Lexan nozzle and venturi for maximum resistance to corrosion and abrasion. Cleanout plug provided for ease of service.

A: Precision-molded for perfect balance...ultra-smooth for highest performance and efficiency.

A: Pump primes faster, handles more air, with multi-port, precision-molded, reinforced polypropylene diffuser.

A: Precision lapped and highly polished carbon-ceramic, stainless steel construction. Internal design guarantees continuous water lubrication.

A: Superior insulation materials protect against excessive moisture and contaminants...assure prolonged motor life.

B: Diecast under high pressures for uniform performance and greater efficiency, dynamically balanced.

B: Shielded, permanently lubricated bearings, extensively tested to ensure extended life and smooth, quiet operation.

A: Stainless steel for maximum corrosion resistance; one-piece threaded shaft for positive impeller drive and alignment.

A: Professional quality, allows cut-in and differential adjustments.

A

AA B	1/2	30-50	Shallow Well Jet	A		115/230	A B
				1-1/4"	1"		
5HN	1/2	30-50	Shallow Well Jet	1-1/4"	1"	115/230	47
7HN	3/4	30-50	Shallow Well Jet	1-1/4"	1"	115/230	65
10HN	1	30-50	Shallow Well Jet	1-1/4"	1"	115/230	70

Pentair trademarks and logos are owned by Pentair plc or its affiliates. All other third party registered and unregistered trademarks and logos are the property of their respective owners.

B

Cast iron, self-priming shallow well jet pumps

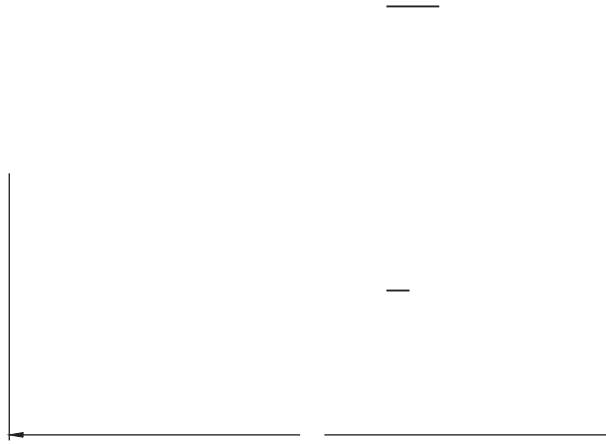
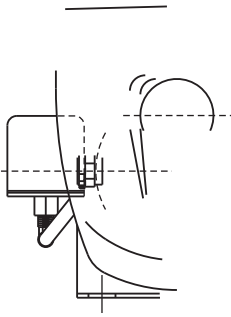
A large table that has been almost entirely redacted with black and grey bars. Only a grid of lines is visible, indicating the structure of the table. The table has approximately 10 columns and 4 rows of data cells.

B

Cast iron, self-priming shallow well jet pumps

AA B		B
5HN	18.7	7.1
7HN	21.3	7.0
10HN	22.4	8.0

5



7

10

Dimensions (in inches) are for estimating purposes only.



US: 293 WRIGHT STREET, DELAVAN, WI 53115 WWW.BERKELEYPUMPS.COM PH: 888-782-7483 ORDERS FAX: 800-426-9446
CANADA: 490 PINEBUSH ROAD, UNIT 4, CAMBRIDGE, ONTARIO N1T 0A5 PH: 800-363-7867 ORDERS FAX: 888-606-5484