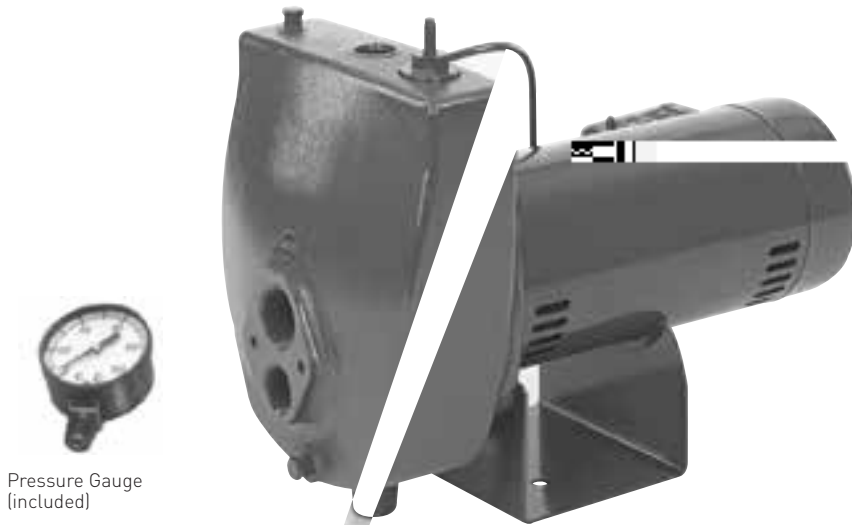


# BERKELEY PROJE HL

Cast iron, self-priming convertible jet pumps



Pressure Gauge (included)



**P. J. HL** ...  
 ... 1/2 1 HP ...  
**P. J. HL** ...  
 ... 4" ... 2" ...  
 3" ...

## APPLICATION

for homes, farms and cottages.

## SPECIFICATION

- Body**: Close-grained cast iron
- Impeller**: High-strength Noryl®
- Diffuser**: Reinforced polypropylene with brass wear ring
- Shaft**: One-piece threaded 416 stainless steel
- Base**: Steel, 12 gauge
- Motor Temperature**: 140°F
- Maximum Pressure**: 50 PSI
- Pressure Range**: 30-50 PSI
- Operation**: "Suction-over-Drive"
- Pressure Gauge**: 0-100 PSI

## FEATURES

- Quality Construction**: Close-grained cast iron pump body is a rugged one-piece unit, specially treated to resist corrosion. Drain port provided for easy winterizing.
- Non-Vibration**: Precision-molded for perfect balance...ultra-smooth for highest performance and efficiency.
- Positive Multi-Port Diffuser**: Pump primes faster, handles more air, with multi-port, precision-molded, reinforced polypropylene diffuser.
- Pressure Control**: High quality, cut-in and differential pressure setting are adjustable.
- Maximum Life**: Precision lapped and highly polished carbon-ceramic, stainless steel construction. Internal design guarantees continuous water lubrication for maximum protection.
- Motor Protection**: Superior insulation materials protect against excessive moisture and contaminants...assures prolonged motor life.
- Balance & Efficiency**: Diecast under high pressures for uniform performance and greater efficiency...dynamically balanced.
- High-Durability Bearings**: Shielded, permanently lubricated bearings, extensively tested to ensure extended life and smooth, quiet operation.
- Positive Motor Drive**: 416 stainless steel for maximum corrosion resistance; one-piece threaded shaft for positive impeller drive and alignment.

## ORDERING INFORMATION

CATALOG NUMBER	HP	DE CRIPION	PIPE APPROPRIATE			MO. OF POLYMER	APPROX. WEIGHT (LB.)
			C. ION	DI. E	DI. CHARGE		
50	1/2		1-1/4"	1"	1"	115/230	42
70	3/4		1-1/4"	1"	1"	115/230	60
100	1		1-1/4"	1"	1"	115/230	65

A Jet Package should be ordered with every Series HL Pump.

NOTE: Pumps installed with a Pro-Source® tank require a 100 PSI relief valve. Pumps installed with a conventional tank require a 75 PSI relief valve. Relief valve must be capable of relieving flow of pump at relief pressure.

Pentair trademarks and logos are owned by Pentair plc or its affiliates. All other third party registered and unregistered trademarks and logos are the property of their respective owners.







