

O, NE, MAN, AL
CP, CB Series with TEFC Motors
Centrifugal Pump

MODELS

Medium Head – Noryl® Impellers

Medium Head – Brass Impellers

High Head – Noryl® Impellers

High Head – Brass Impellers

1/3 H.P.: 115 Volt Single Phase

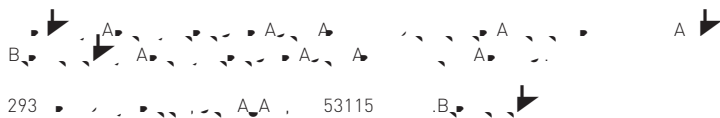
1/2 through 2-1/2 H.P.:

115/230 Volt Single Phase

230 Volt Single Phase

230/460 Volt Three Phase

575 Volt Three Phase

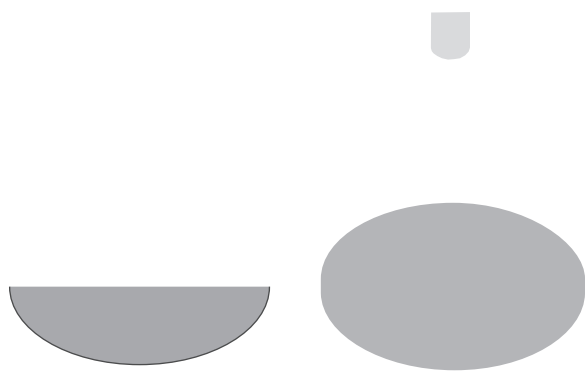


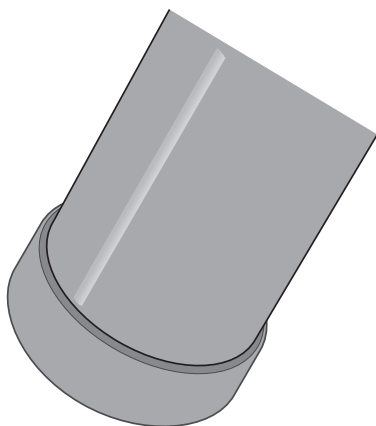


- **A**

Support both suction and discharge piping independently at a point near the pump to avoid putting a strain on the pump housing. Start all piping **A**.

Increase pipe diameter at both the suction and discharge





	A										
	1					1/1					
	1/2	11	0	11	/	10	11	1	1-1/2	2	
1*	A100CL-T		A100DL-T	A100EL-T	A100FL-T						
1*	Motor - 115/230V, 60 Cycle, Single Phase										
1*	Motor - 230V, 60 Cycle, Single Phase										
1*	Motor - 575V, 60 Cycle, Three Phase										
2	Water Slinger										
3	Seal Plate										
4	Shaft Seal										
5	Impeller - Single Phase										
5	Impeller - Three Phase										
5A	Impeller Screw - Single Phase										
5A	Impeller Screw - Three Phase										
6	Volute Assembly - Complete										
6	Volute Assembly - w/Wear Ring										
7	Wear Ring (only)										
8	Studs - 3/8 - 16 x 2" Lg.										
9	Pipe Plug - 1/4" NPT										
9A	Drain Plug - 1/4" NPT										
8	Capscrew - 3/8 - 16 x 1-1/2" Lg.										
8A	Capscrew - 3/8 - 16 x 1-1/4" Lg.										
9	Pipe Plug - 1/4" NPT										
9A	Drain Plug - 1/4" NPT										
10	Gasket - Volute										
11	Nuts - 3/8 - 16 Hex										
12	Base										
12A	Motor Pad										

* For repair or service to motors, always give the motor Model Number and any other data found on the Motor Model Plate.

A	A	A	A	A	A	A	B	A	A	A	B1	B1 1/2	B1 1/2	2-1/2

A A L A L - L L

A A A B A

		A						B1 1/2	B1 1	B1 1/2	B1 21	B1 1/2
		1/2	/	1	10 B 11	10 B 11	1 B 11					
1*	Motor - 115/230V, 60 Cycle, Single Phase	A100CL-T	A100DL-T	A100EL-T	A100FL-T	-	-	AE100GL-T	AE100GL-T	-	-	-
1*	Motor - 230V, 60 Cycle, Single Phase	-	-	-	-	-	-	AP100GL-T	AP100GL-T	-	-	AE100G5L-T
1*	Motor - 230/460V, 60 Cycle, Three Phase	-	-	-	-	-	-	J218-999AC	J218-999AC	-	-	AP100G5L-T
1*	Motor - 575V, 60 Cycle, Three Phase	J218-996AC	J218-997AC	J218-998AC	J218-999AC	J218-1000AC	J218-1001AC	J218-1000AC	J218-1000AC	J218-1000AC	J218-1001AC	J218-1001AC
†2	Water Slinger	17351-0009	17351-0009	17351-0009	17351-0009	17351-0009	17351-0009	17351-0009	17351-0009	17351-0009	17351-0009	17351-0009
3	Seal Plate	C3-1042P	C3-1042P	C3-1042P	C3-1042P	C3-1042P	C3-181	C3-1042P	C3-1042P	C3-181	C3-181	C3-181
†4	Shaft Seal	U109-6A	U109-6A	U109-6A	U109-6A	U109-6A	U109-6A	U109-6A	U109-6A	U109-6A	U109-6A	U109-6A
5	Impeller - Single Phase	C5-256BA	C105-94B	C5-254B	C5-254BB	C5-254BB	C5-257BB	C5-254BB	C5-254BB	C5-257BB	C5-257BB	C5-257BB
5	Impeller - Three Phase	C5-256BA	C105-256BAA	C5-254BA	C5-254BC	C5-254BC	C5-257BB	C5-254BA	C5-254BC	C5-257BB	C5-257BB	C5-257BB
5A	Impeller Screw - Single Phase	-	-	-	-	-	C30-14	-	-	C30-14	C30-14	C30-14
5A	Impeller Screw - Three Phase	C30-12	C30-12	C30-12	C30-12	C30-12	C30-14	C30-12	C30-12	C30-14	C30-14	C30-14
6	Volute Assembly - Complete	C101-281E	C101-281E	C101-281E	C101-281E	C101-281E	C101-264E	C101-281E	C101-281E	C101-264E	C101-264E	C101-264EB
7	Wear Ring (only)	C23-27	C23-27	C23-27	C23-27	C23-27	C23-19	C23-27	C23-27	C23-19	C23-19	C23-19
8	Capscrew - 3/8 - 16 x 1" **	-	-	-	-	-	U30-74ZP	-	-	U30-74ZP	U30-74ZP	U30-74ZP
8A	Capscrew - 3/8 - 16 x 1-1/4" **	U30-75ZP	U30-75ZP	U30-75ZP	U30-75ZP	U30-75ZP	U30-75ZP	U30-75ZP	U30-75ZP	U30-75ZP	U30-75ZP	U30-75ZP
8	Capscrew - 3/8 - 16 x 1-1/2"	U30-76ZP	U30-76ZP	U30-76ZP	U30-76ZP	U30-76ZP	U30-76ZP	U30-76ZP	U30-76ZP	U30-76ZP	U30-76ZP	U30-76ZP
9	Pipe Plug - 1/4" NPT	U78-57CT	U78-57CT	U78-57CT	U78-57CT	U78-57CT	U78-57CT	U78-57CT	U78-57CT	U78-57CT	U78-57CT	U78-57CT
9A	Drain Plug - 1/4" NPT	U78-941ZPV	U78-941ZPV	U78-941ZPV	U78-941ZPV	U78-941ZPV	U78-941ZPV	U78-941ZPV	U78-941ZPV	U78-941ZPV	U78-941ZPV	U78-941ZPV
†10	Gasket - Volute	C20-121	C20-121	C20-121	C20-121	C20-121	C20-121	C20-121	C20-121	C20-121	C20-121	C20-121
12	Base	J4-9A	J4-9A	J4-9A	J4-9A	J4-9A	J4-9A	J4-9A	J4-9A	J4-9A	J4-9A	J4-9A
12A	Motor Pad	C35-5	C35-5	C35-5	C35-5	C35-5	C35-5	C35-5	C35-5	C35-5	C35-5	C35-5

* For repair or service to motors, always give the motor Model Number and any other data found on the Motor Model Plate.
 ** Models 20CBH21T, 20CBH33T, 25CBH21T, 25CBH33T and 25CBH53T use (4) U30-104ZP Socket Head Capscrews.
 † Included in Seal and Gasket Kit.

B - A A

B A A	
<p>A</p> <p>1. Pump not properly primed.</p>	<p>1. Make sure pump casing and suction line are full of water. See priming instructions.</p>
A A A / A	
<p>1. Air pockets or leaks in suction line.</p> <p>2. Clogged impeller.</p>	<p>1. Check suction piping.</p> <p>2. Remove and clean.</p>
<p>1. Air leaks in suction line.</p> <p>2. Excessive suction lift and operating too near shut-off point.</p> <p>3. Water level drops while pumping, uncovering suction piping.</p>	<p>1. Check suction piping</p> <p>2. Move pump nearer to water level.</p> <p>3. Check water supply. Add length of pipe to suction to keep submerged end under water.</p>
A A B A	
<p>1. Bent shaft and/or damaged bearings.</p> <p>2. Suction and/or discharge piping not properly supported and anchored.</p>	<p>1. Take motor to authorized motor repair shop.</p> <p>2. See that all piping is supported to relieve strain on pump assembly.</p>

Limited Warranty

