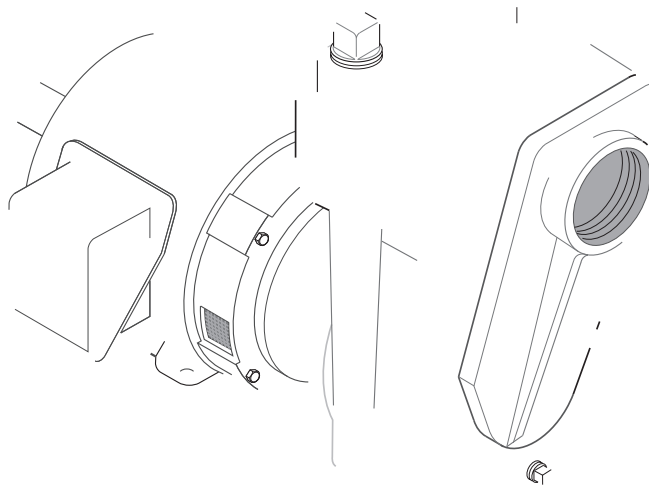



Close Coupled Motor Drive Self Priming Centrifugal Pump



SAVE THESE INSTRUCTIONS

- This manual contains important instructions that should be followed during installation, operation, and maintenance of the product. Save this manual for future reference.

 This is the safety alert symbol. When you see this symbol on your pump or in this manual, look for one of the following signal words and be alert to the potential for personal injury!

DANGER

MOTOR / PUMP LIFTING:

⚠WARNING Heavy parts. NEVER walk or reach under a suspended pump. DO NOT screw an eye bolt into the motor housing and attempt to lift assembly!

The crane or hoist must have a capacity in excess of the combined weight of the motor and pump. Use a minimum of two chains or straps to lift motor/pump assembly. Each chain or strap must have a capacity in excess of the combined weight of the motor and pump.

Wrap the first chain or strap under the fan end of the motor up tight against the motor feet, and the second chain or strap under the pump bracket between the pump end and the motor.

Raise motor/pump assembly slowly to ensure that the chains or straps will not slip when put under tension. Balance motor and pump with chains or straps to maintain proper weight distribution. If not balanced, release tension on the chains or straps and readjust.

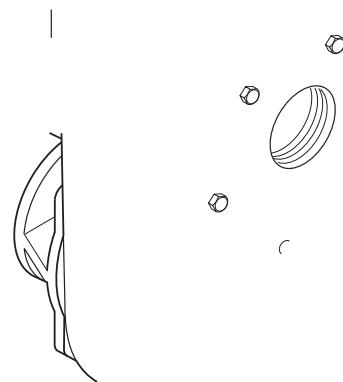
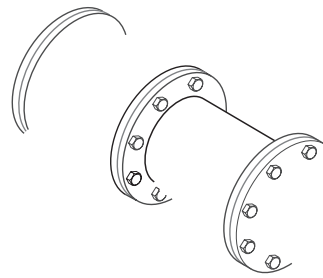


Figure 1 - Lifting the assembly

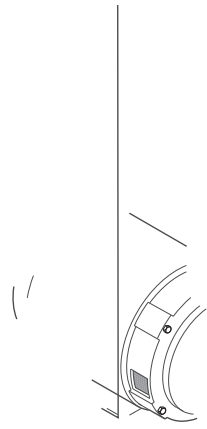
L

Locate the pump as near the water source as practical.
Make the pipe run as short and straight as possible,











- Remove capscrews holding bracket to motor.
- Install a standard gear puller to

Installation

Procedure and parts will vary slightly depending on pump style.

NOTICE Do not scratch or chip polished ceramic face. Also . . .do not touch polished surface.

- Place bracket on

Cause	Corrective Action
Electrical	

