

APPLICATION

Multi-fixture RV adjustable by-pass fresh water pump installation.
Other uses may include 24V DC pressurized water systems in cabins. This pump may be used for general fresh water transfer.

PUMP:

Type: 4 Chamber Diaphragm pump
Ports: 1/2"-14 NPSM-Male.
Liquid: 54 °C [130 °F] Max
Dry-Prime: 1.82 M [6 feet]
Inlet PSI: 2.0 Bar [30 PSI] Max
Run Dry: Yes

ELECTRICAL:

Motor: 24VDC Permanent Magnet, Intermittent Duty
Protection: Thermal Overload, Automatic Restart
Leads: 16 AWG, 25 cm [10"] Red +, 33 cm [13"] Black -
Fuse: 5 Amp Recommended
Control: Shut-Off 2.06 Bar [30 PSI]
Restart 1.37 Bar [20 PSI]
Max By-Pass 2.4 Bar [35 PSI]

MATERIALS:

Housing: Polypro
Valves: EPDM
Diaphragm: Santoprene
Hardware: Stainless and Zinc Plated Steel

APPROVALS:

CSA, CE, e-Mark

WARRANTY:

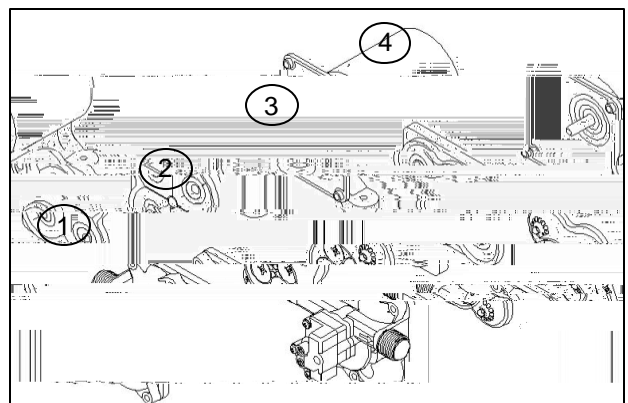
Contact SHURflo Europe for details

SHIPPING:

Net Weight: 2.3 Kg [5 Lb] each
Carton Quantity: 12
Carton Weight: 27 Kg [60 Lb]
Carton Size: 60.9cm x 45.7cm x 27.9cm
[24"L x 18"W x 11"H]

RELATED DOCUMENTS:

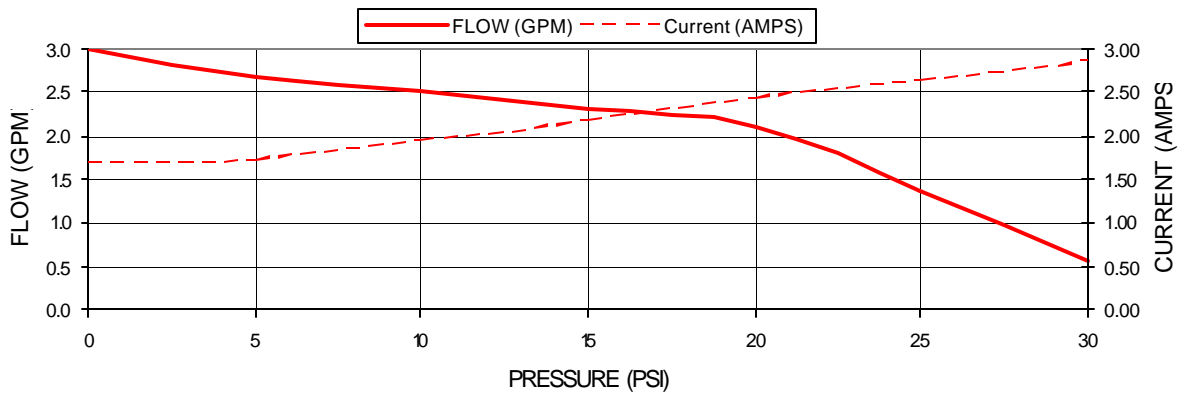
Catalog: MS-030-138
Installation Manual: 911-1023
Applications Spec Guide: MS-020-005



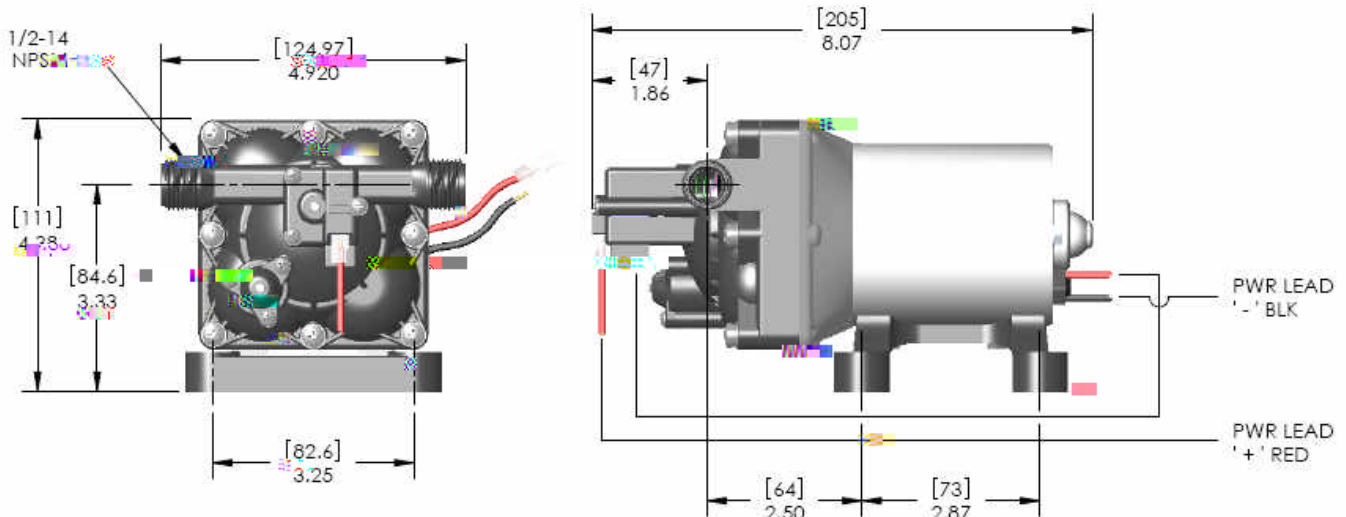
| Number | Description | Part Number |
|--------|-------------|-------------|
| 1 | Upper Assy | 94-890-09 |
| 2 | Valve Assy | 94-800-01 |
| 3 | Drive Assy | 94-800-02 |
| 3 | | |

TYPICAL PERFORMANCE

| PRESSURE | | FLOW | | CURRENT |
|----------|-----|------|------|---------|
| BAR | PSI | GPM | LPM | AMPS |
| 0.0 | 0 | 3.0 | 11.3 | 1.70 |
| 0.3 | 5 | 2.67 | 10.1 | 1.73 |
| 0.7 | 10 | 2.50 | 9.46 | 1.94 |
| 1.0 | 15 | 2.32 | 8.78 | 2.17 |
| 1.4 | 20 | 2.12 | 8.02 | 2.43 |
| 1.7 | 25 | 1.37 | 5.18 | 2.64 |
| 2.0 | 30 | 0.56 | 2.11 | 2.86 |



DIMENSIONS [mm]



Visit our Web Site at <http://www.shurflo.com>

Shurflo reserves the right to update specifications, change prices, or make substitutions without notice.

SHURflo Europe, Middle East, Africa
 Pentair Water Belgium bvba
 Industriepark Wolfstee, Toekomstlann 30
 B-2200 Herentals, Belgium
 Phone + 32-14-283500 Fax + 32-14-283505

